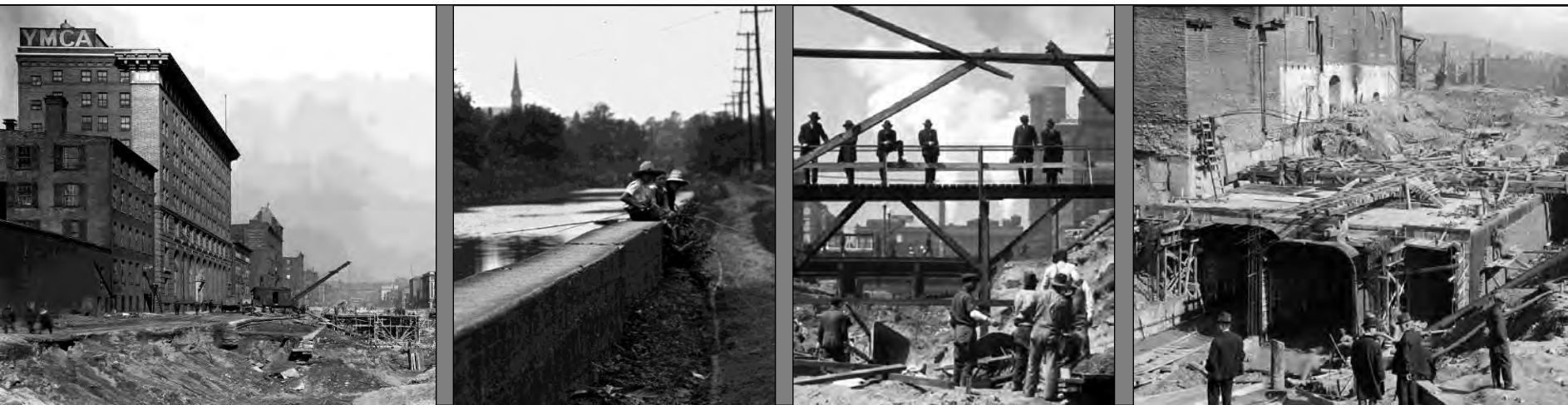


DIGITIZING THE CINCINNATI SUBWAY AND STREET IMPROVEMENT PROJECTS PHOTOGRAPHS

DEVELOPING & PROMOTING DIGITAL ARCHIVES: A CASE STUDY

ANGELA VANDERBILT, PROJECT DIGITAL ARCHIVIST





THE PROJECT

- 1-year photographic digitization project funded by a grant through the Library Services and Technology Act (LSTA), administered by the State Library of Ohio
- Collaborative effort between UC Libraries' Digital Projects and the Archives & Rare Books Library (ARB)

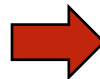




GOALS

- Increase availability of collection to advance research and scholarship

- Digitally preserve and make freely accessible on the web a collection of historically significant photographs representing Cincinnati's urban development from 1920 to 1957
- Coordinate the removal and safe disposal of a deteriorating hazardous material – cellulose nitrate film – from the archive to ensure the safety of the repository as a whole



COLLABORATION DIGITAL PROJECTS AND ARCHIVES & RARE BOOKS LIBRARY

- Co-authorship of grant proposal
- Shared goal of capturing visual data



- Dual oversight of project
 - Photographic service selection
 - Project digital archivist selection
 - Budget and schedule tracking





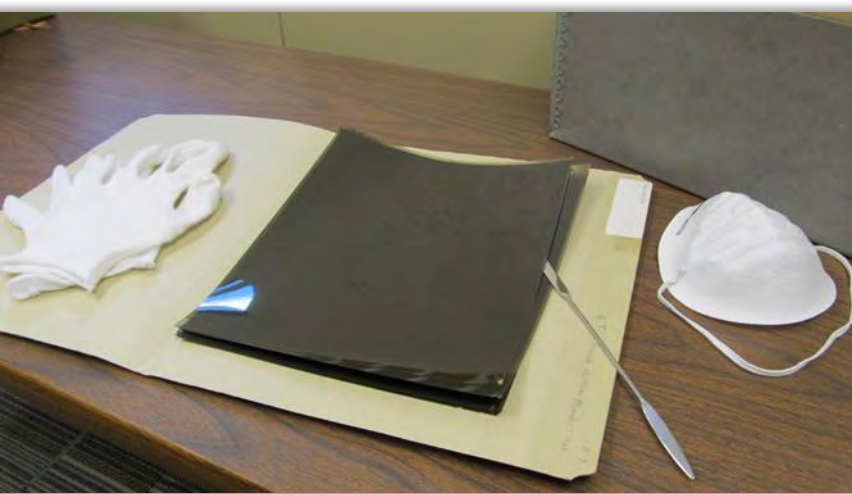
SIGNIFICANCE

- Visual record of the construction of a subway and resulting changes made to infrastructure
- Comprehensive record of Cincinnati's growth and urban development at a specific period in city's history
- Documents the development of the city's transportation system, from canal to street cars to interstate highway



DIGITIZATION

- Collection assessment
- Record identification and tracking
- Transfer to Robin Imaging
- Transcription of photographer notes



- Digital collection building for Digital Resource Commons and LUNA
- Identifying geo-coordinates for mapping
- Weekly blog posts in LiBlog
- Physical and online exhibits





The ribbon shows the following tabs: File, Home, Insert, Page Layout, Formulas, Data, Review, View.

The Data tab contains the following groups:

- Data Connections: From Existing Database, From Web, From Text, From Other Sources, Existing Connections, Refresh All, Get External Data.
- Connections: Refresh All, Edit Connection Properties, Break Link To Source, Delete Connection.
- Sort & Filter: Sort, Filter, Advanced Filter, Sort & Filter Task Pane.
- Data Tools: Text to Columns, Remove Duplicates, Data Validation, Consolidate, What-If Analysis, Grouping, Ungroup, Subtotal, Outline.

University of Cincinnati Archives & Rare Books Library / Digitization / 25th Negatives from Box 19, Folders 1 - 44 of the OH-07-3 City of Cincinnati - City Engineer Collection														
series	sub-series	box#	folder #	folder_name	file#	description	date	time	format	size	original_reel	Scan_Status	matching_print	subject_of_image
D	Rapid Transit/Central City Negatives	13	01	November 8, 1926	b19_001_001	Nov. 8/26/12:20 PM/French Bauer Co. Shipplaster E. of Plum / 1815	1926-11-08	2:20 PM	Negative - Nitrate	8" x 10"	Good	Approved	Yes	Structural Damage
D	Rapid Transit/Central City Negatives	13	01	November 8, 1926	b19_001_002	Nov. 8/26/12:30 PM/French Bauer Co. Truck entrance / 1880	1926-11-08	2:30 PM	Negative - Nitrate	8" x 10"	Good	Approved	Yes	Structural Damage
D	Rapid Transit/Central City Negatives	13	01	November 8, 1926	b19_001_003	Nov. 8/26/12:35 PM/Hendrick Bldg. N.W. Cor. / 1881	1926-11-08	2:35 PM	Negative - Nitrate	8" x 10"	Good	Approved	Yes	Structural Damage
D	Rapid Transit/Central City Negatives	13	01	November 8, 1926	b19_001_004	Nov. 8/26/12:40 PM/Hendrick Bldg. S.W. Cor. / 1882	1926-11-08	2:40 PM	Negative - Nitrate	8" x 10"	Good	Approved	Yes	Structural Damage
D	Rapid Transit/Central City Negatives	13	01	November 8, 1926	b19_001_005	Nov. 8/26/12:45 PM/Hendrick Bldg. S.W. Cor. / 1883	1926-11-08	2:45 PM	Negative - Nitrate	8" x 10"	Good	Approved	Yes	Structural Damage
D	Rapid Transit/Central City Negatives	13	01	November 8, 1926	b19_001_006	Nov. 8/26/12:47 PM/S.E. Cor. Elm & Central Parkway (Scribble) / 1804	1926-11-08	2:47 PM	Negative - Nitrate	8" x 10"	Good	Approved	Yes	Structural Damage
D	Rapid Transit/Central City Negatives	13	01	November 8, 1926	b19_002_001	Nov. 8/26/12:50 PM/S.E. Cor. Elm & Central Parkway (Scribble) / 1805	1926-11-08	2:50 PM	Negative - Nitrate	8" x 10"	Good	Approved	Yes	Structural Damage
D	Rapid Transit/Central City Negatives	13	02	November 8, 1926 - November 12, 1926	b19_002_002	Nov. 8/26/12:54 PM/S.E. Cor. Elm & Central Parkway (Scribble) / 1806	1926-11-08	2:54 PM	Negative - Nitrate	8" x 10"	Good	Approved	Yes	Structural Damage
D	Rapid Transit/Central City Negatives	13	02	November 8, 1926 - November 12, 1926	b19_002_003	Nov. 8/26/13:05 PM/The Hotel Co. Central Parkway E. of Elm / 1887	1926-11-08	3:05 PM	Negative - Nitrate	8" x 10"	Good	Approved	Yes	Structural Damage
D	Rapid Transit/Central City Negatives	13	02	November 8, 1926 - November 12, 1926	b19_002_004	Nov. 8/26/13:08 PM/Pavilion D.C. Co. / 1888	1926-11-08	3:08 PM	Negative - Nitrate	8" x 10"	Good	Approved	Yes	Structural Damage
D	Rapid Transit/Central City Negatives	13	02	November 8, 1926 - November 12, 1926	b19_002_005	Nov. 8/26/13:15 PM/Venue Bldg. N.E. Cor. Plum & Central Parkway / 1809	1926-11-08	3:15 PM	Negative - Nitrate	8" x 10"	Good	Approved	Yes	Structural Damage
D	Rapid Transit/Central City Negatives	13	02	November 8, 1926 - November 12, 1926	b19_002_006	Nov. 8/26/13:22 PM/Pape Bldg. / 1890	1926-11-08	3:22 PM	Negative - Nitrate	8" x 10"	Good	Approved	Yes	Structural Damage
D	Rapid Transit/Central City Negatives	13	03	November 12, 1926	b19_003_001	Nov. 12/26/1:56 PM/Pape Bldg. / 1890	1926-11-08	1:56 PM	Negative - Nitrate	8" x 10"	Good	Approved	Yes	Structural Damage
D	Rapid Transit/Central City Negatives	13	03	November 12, 1926	b19_003_002	Nov. 12/26/1:58 PM/Central City / 1891	1926-11-08	1:58 PM	Negative - Nitrate	8" x 10"	Good	Approved	Yes	Structural Damage
D	Rapid Transit/Central City Negatives	13	03	November 12, 1926	b19_003_003	Nov. 12/26/2:04 PM/S.W. Cor. Y.M.C.A. / 1892	1926-11-08	2:04 PM	Negative - Nitrate	8" x 10"	Good	Approved	Yes	Structural Damage
D	Rapid Transit/Central City Negatives	13	03	November 12, 1926	b19_003_004	Nov. 12/26/2:04 PM/S.W. Cor. Y.M.C.A. / 1893	1926-11-08	2:04 PM	Negative - Nitrate	8" x 10"	Good	Approved	Yes	Structural Damage
D	Rapid Transit/Central City Negatives	13	03	November 12, 1926	b19_003_005	Nov. 12/26/2:05 PM/Y.M.C.A. Central Parkway Entrance / 1894	1926-11-08	2:05 PM	Negative - Nitrate	8" x 10"	Good	Approved	Yes	Structural Damage
D	Rapid Transit/Central City Negatives	13	03	November 12, 1926	b19_003_006	Nov. 12/26/2:05 PM/Hatching School / 1895	1926-11-08	2:05 PM	Negative - Nitrate	8" x 10"	Good	Approved	Yes	Structural Damage
D	Rapid Transit/Central City Negatives	13	03	November 12, 1926	b19_003_007	Nov. 12/26/2:05 PM/Union Building Co. / 1896	1926-11-08	2:05 PM	Negative - Nitrate	8" x 10"	Good	Approved	Yes	Structural Damage
D	Rapid Transit/Central City Negatives	13	04	November 12, 1926	b19_004_001	Nov. 12/26/2:10 PM/Exposition from View St. / 1897	1926-11-08	2:10 PM	Negative - Nitrate	8" x 10"	Good	Approved	Yes	Structural Damage
D	Rapid Transit/Central City Negatives	13	04	November 12, 1926	b19_004_002	Nov. 12/26/2:12 PM/Exposition from View St. / 1898	1926-11-08	2:12 PM	Negative - Nitrate	8" x 10"	Good	Approved	Yes	Structural Damage
D	Rapid Transit/Central City Negatives	13	04	November 12, 1926	b19_004_003	Nov. 12/26/2:14 PM/Exposition from View St. / 1899	1926-11-08	2:14 PM	Negative - Nitrate	8" x 10"	Good	Approved	Yes	Structural Damage
D	Rapid Transit/Central City Negatives	13	04	November 12, 1926	b19_004_004	Nov. 12/26/2:16 PM/Exposition from View St. / 1900	1926-11-08	2:16 PM	Negative - Nitrate	8" x 10"	Good	Approved	Yes	Structural Damage
D	Rapid Transit/Central City Negatives	13	04	November 12, 1926	b19_004_005	Nov. 12/26/2:18 PM/Exposition from View St. / 1901	1926-11-08	2:18 PM	Negative - Nitrate	8" x 10"	Good	Approved	Yes	Structural Damage
D	Rapid Transit/Central City Negatives	13	04	November 12, 1926	b19_004_006	Nov. 12/26/2:20 PM/Exposition from View St. / 1902	1926-11-08	2:20 PM	Negative - Nitrate	8" x 10"	Good	Approved	Yes	Structural Damage
D	Rapid Transit/Central City Negatives	13	04	November 12, 1926	b19_004_007	Nov. 12/26/2:22 PM/Exposition from View St. / 1903	1926-11-08	2:22 PM	Negative - Nitrate	8" x 10"	Good	Approved	Yes	Structural Damage
D	Rapid Transit/Central City Negatives	13	04	November 12, 1926	b19_004_008	Nov. 12/26/2:24 PM/Exposition from View St. / 1904	1926-11-08	2:24 PM	Negative - Nitrate	8" x 10"	Good	Approved	Yes	Structural Damage
D	Rapid Transit/Central City Negatives	13	04	November 12, 1926	b19_004_009	Nov. 12/26/2:26 PM/Exposition from View St. / 1905	1926-11-08	2:26 PM	Negative - Nitrate	8" x 10"	Good	Approved	Yes	Structural Damage
D	Rapid Transit/Central City Negatives	13	04	November 12, 1926	b19_004_010	Nov. 12/26/2:28 PM/Exposition from View St. / 1906	1926-11-08	2:28 PM	Negative - Nitrate	8" x 10"	Good	Approved	Yes	Structural Damage
D	Rapid Transit/Central City Negatives	13	04	November 12, 1926	b19_004_011	Nov. 12/26/2:30 PM/Exposition from View St. / 1907	1926-11-08	2:30 PM	Negative - Nitrate	8" x 10"	Good	Approved	Yes	Structural Damage
D	Rapid Transit/Central City Negatives	13	04	November 12, 1926	b19_004_012	Nov. 12/26/2:32 PM/Exposition from View St. / 1908	1926-11-08	2:32 PM	Negative - Nitrate	8" x 10"	Good	Approved	Yes	Structural Damage
D	Rapid Transit/Central City Negatives	13	04	November 12, 1926	b19_004_013	Nov. 12/26/2:34 PM/Exposition from View St. / 1909	1926-11-08	2:34 PM	Negative - Nitrate	8" x 10"	Good	Approved	Yes	Structural Damage
D	Rapid Transit/Central City Negatives	13	04	November 12, 1926	b19_004_014	Nov. 12/26/2:36 PM/Exposition from View St. / 1910	1926-11-08	2:36 PM	Negative - Nitrate	8" x 10"	Good	Approved	Yes	Structural Damage
D	Rapid Transit/Central City Negatives	13	04	November 12, 1926	b19_004_015	Nov. 12/26/2:38 PM/Exposition from View St. / 1911	1926-11-08	2:38 PM	Negative - Nitrate	8" x 10"	Good	Approved	Yes	Structural Damage
D	Rapid Transit/Central City Negatives	13	04	November 12, 1926	b19_004_016	Nov. 12/26/2:40 PM/Exposition from View St. / 1912	1926-11-08	2:40 PM	Negative - Nitrate	8" x 10"	Good	Approved	Yes	Structural Damage
D	Rapid Transit/Central City Negatives	13	04	November 12, 1926	b19_004_017	Nov. 12/26/2:42 PM/Exposition from View St. / 1913	1926-11-08	2:42 PM	Negative - Nitrate	8" x 10"	Good	Approved	Yes	Structural Damage
D	Rapid Transit/Central City Negatives	13	04	November 12, 1926	b19_004_018	Nov. 12/26/2:44 PM/Exposition from View St. / 1914	1926-11-08	2:44 PM	Negative - Nitrate	8" x 10"	Good	Approved	Yes	Structural Damage
D	Rapid Transit/Central City Negatives	13	04	November 12, 1926	b19_004_019	Nov. 12/26/2:46 PM/Exposition from View St. / 1915	1926-11-08	2:46 PM	Negative - Nitrate	8" x 10"	Good	Approved	Yes	Structural Damage
D	Rapid Transit/Central City Negatives	13	04	November 12, 1926	b19_004_020	Nov. 12/26/2:48 PM/Exposition from View St. / 1916	1926-11-08	2:48 PM	Negative - Nitrate	8" x 10"	Good	Approved	Yes	Structural Damage
D	Rapid Transit/Central City Negatives	13	04	November 12, 1926	b19_004_021	Nov. 12/26/2:50 PM/Exposition from View St. / 1917	1926-11-08	2:50 PM	Negative - Nitrate	8" x 10"	Good	Approved	Yes	Structural Damage
D	Rapid Transit/Central City Negatives	13	04	November 12, 1926	b19_004_022	Nov. 12/26/2:52 PM/Exposition from View St. / 1918	1926-11-08	2:52 PM	Negative - Nitrate	8" x 10"	Good	Approved	Yes	Structural Damage
D	Rapid Transit/Central City Negatives	13	04	November 12, 1926	b19_004_023	Nov. 12/26/2:54 PM/Exposition from View St. / 1919	1926-11-08	2:54 PM	Negative - Nitrate	8" x 10"	Good	Approved	Yes	Structural Damage
D	Rapid Transit/Central City Negatives	13	04	November 12, 1926	b19_004_024	Nov. 12/26/2:56 PM/Exposition from View St. / 1920	1926-11-08	2:56 PM	Negative - Nitrate	8" x 10"	Good	Approved	Yes	Structural Damage
D	Rapid Transit/Central City Negatives	13	04	November 12, 1926	b19_004_025	Nov. 12/26/2:58 PM/Exposition from View St. / 1921	1926-11-08	2:58 PM	Negative - Nitrate	8" x 10"	Good	Approved	Yes	Structural Damage
D	Rapid Transit/Central City Negatives	13	04	November 12, 1926	b19_004_026	Nov. 12/26/3:00 PM/Exposition from View St. / 1922	1926-11-08	3:00 PM	Negative - Nitrate	8" x 10"	Good	Approved	Yes	Structural Damage
D	Rapid Transit/Central City Negatives	13	04	November 12, 1926	b19_004_027	Nov. 12/26/3:02 PM/Exposition from View St. / 1923	1926-11-08	3:02 PM	Negative - Nitrate	8" x 10"	Good	Approved	Yes	Structural Damage
D	Rapid Transit/Central City Negatives	13	04	November 12, 1926	b19_004_028	Nov. 12/26/3:04 PM/Exposition from View St. / 1924	1926-11-08	3:04 PM	Negative - Nitrate	8" x 10"	Good	Approved	Yes	Structural Damage
D	Rapid Transit/Central City Negatives	13	04	November 12, 1926	b19_004_029	Nov. 12/26/3:06 PM/Exposition from View St. / 1925	1926-11-08	3:06 PM	Negative - Nitrate	8" x 10"	Good	Approved	Yes	Structural Damage
D	Rapid Transit/Central City Negatives	13	04	November 12, 1926	b19_004_030	Nov. 12/26/3:08 PM/Exposition from View St. / 1926	1926-11-08	3:08 PM	Negative - Nitrate	8" x 10"	Good	Approved	Yes	Structural Damage
D	Rapid Transit/Central City Negatives	13	04	November 12, 1926	b19_004_031	Nov. 12/26/3:10 PM/Exposition from View St. / 1927	1926-11-08	3:10 PM	Negative - Nitrate	8" x 10"	Good	Approved	Yes	Structural Damage
D	Rapid Transit/Central City Negatives	13	04	November 12, 1926	b19_004_032	Nov. 12/26/3:12 PM/Exposition from View St. / 1928	1926-11-08	3:12 PM	Negative - Nitrate	8" x 10"	Good	Approved	Yes	Structural Damage
D	Rapid Transit/Central City Negatives	13	04	November 12, 1926	b19_004_033	Nov. 12/26/3:14 PM/Exposition from View St. / 1929	1926-11-08	3:14 PM	Negative - Nitrate	8" x 10"	Good	Approved	Yes	Structural Damage
D	Rapid Transit/Central City Negatives	13	04	November 12, 1926	b19_004_034	Nov. 12/26/3:16 PM/Exposition from View St. / 1930	1926-11-08	3:16 PM	Negative - Nitrate	8" x 10"	Good	Approved	Yes	Structural Damage
D	Rapid Transit/Central City Negatives	13	04	November 12, 1926	b19_004_035	Nov. 12/26/3:18 PM/Exposition from View St. / 1931	1926-11-08	3:18 PM	Negative - Nitrate	8" x 10"	Good	Approved	Yes	Structural Damage
D	Rapid Transit/Central City Negatives	13	04	November 12, 1926	b19_004_036	Nov. 12/26/3:20 PM/Exposition from View St. / 1932	1926-11-08	3:20 PM	Negative - Nitrate	8" x 10"	Good	Approved	Yes	Structural Damage
D	Rapid Transit/Central City Negatives	13	04	November 12, 1926	b19_004_037	Nov. 12/26/3:22 PM/Exposition from View St. / 1933	1926-11-08	3:22 PM	Negative - Nitrate	8" x 10"	Good	Approved	Yes	Structural Damage
D	Rapid Transit/Central City Negatives	13	04	November 12, 1926	b19_004_038	Nov. 12/26/3:24 PM/Exposition from View St. / 1934	1926-11-08	3:24 PM	Negative - Nitrate	8" x 10"	Good	Approved	Yes	Structural Damage
D	Rapid Transit/Central City Negatives	13	04	November 12, 1926	b19_004_039	Nov. 12/26/3:26 PM/Exposition from View St. / 1935	1926-11-08	3:26 PM	Negative - Nitrate	8" x 10"	Good	Approved	Yes	Structural Damage
D	Rapid Transit/Central City Negatives	13	04	November 12, 1926	b19_004_040	Nov. 12/26/3:28 PM/Exposition from View St. / 1936	1926-11-08	3:28 PM	Negative - Nitrate	8" x 10"	Good	Approved	Yes	Structural Damage
D	Rapid Transit/Central City Negatives	13	04	November 12, 1926	b19_004_041	Nov. 12/26/3:30 PM/Exposition from View St. / 1937	1926-11-08	3:30 PM	Negative - Nitrate	8" x 10"	Good	Approved	Yes	Structural Damage
D	Rapid Transit/Central City Negatives	13	04	November 12, 1926	b19_004_042	Nov. 12/26/3:32 PM/Exposition from View St. / 1938	1926-11-08	3:32 PM	Negative - Nitrate	8" x 10"	Good	Approved	Yes	Structural Damage
D	Rapid Transit/Central City Negatives	13	04	November 12, 1926	b19_004_043	Nov. 12/26/3:34 PM/Exposition from View St. / 1939	1926-11-08	3:34 PM	Negative - Nitrate	8" x 10"	Good	Approved	Yes	Structural Damage
D	Rapid Transit/Central City Negatives	13	04	November 12, 1926	b19_004_044	Nov. 12/26/3:36 PM/Exposition from View St. / 1940	1926-11-08	3:36 PM	Negative - Nitrate	8" x 10"	Good	Approved	Yes	Structural Damage
D	Rapid Transit/Central City Negatives	13	04	November 12, 1926	b19_004_045	Nov. 12/26/3:38 PM/Exposition from View St. / 1941	1926-11-08	3:38 PM	Negative - Nitrate	8" x 10"	Good	Approved	Yes	Structural Damage
D	Rapid Transit/Central City Negatives	13	04	November 12, 1926	b19_004_046	Nov. 12/26/3:40 PM/Exposition from View St. / 1942	1926-11-08	3:40 PM	Negative - Nitrate	8" x 10"	Good	Approved	Yes	Structural Damage
D	Rapid Transit/Central City Negatives	13	04	November 12, 1926	b19_004_047	Nov. 12/26/3:42 PM/Exposition from View St. / 1943	1926-11-08	3:42 PM	Negative - Nitrate	8" x 10"	Good	Approved	Yes	Structural Damage
D	Rapid Transit/Central City Negatives	13	04	November 12, 1926	b19_004_048	Nov. 12/26/3:44 PM/Exposition from View St. / 1944	1926-11-08	3:44 PM	Negative - Nitrate	8" x 10"	Good	Approved	Yes	Structural Damage
D	Rapid Transit/Central City Negatives	13	04	November 12, 1926	b19_004_049	Nov. 12/26/3:46 PM/Exposition from View St. / 1945	1926-11-08	3:46 PM	Negative - Nitrate	8" x 10"	Good	Approved	Yes	Structural Damage
D	Rapid Transit/Central City Negatives	13	04	November 12, 1926	b19_004_050	Nov. 12/26/3:48 PM/Exposition from View St. / 1946	1926-11-08	3:48 PM	Negative - Nitrate	8" x 10"	Good	Approved	Yes	Structural Damage
D	Rapid Transit/Central City Negatives	13	04	November 12, 1926	b19_004_051	Nov. 12/26/3:50 PM/Exposition from View St. / 1947	1926-11-08	3:50 PM	Negative - Nitrate	8" x 10"	Good	Approved	Yes	Structural Damage
D	Rapid Transit/Central City Negatives	13	04	November 12, 1926	b19_004_052	Nov. 12/26/3:52 PM/Exposition from View St. / 1948	1926-11-08	3:52 PM	Negative - Nitrate	8" x 10"	Good	Approved	Yes	Structural Damage
D	Rapid Transit/Central City Negatives	13	04	November 12, 1926	b19_004_053	Nov. 12/26/3:54 PM/Exposition from View St. / 1949	1926-11-08	3:54 PM	Negative - Nitrate	8" x 10"	Good	Approved	Yes	Structural Damage
D	Rapid Transit/Central City Negatives													

Cincinnati Subway and Street Improvements - Mozilla Firefox

File Edit View History Bookmarks Tools Help

Cincinnati Subway and Street Improvem... +

drcuc-test.ohiolink.edu/handle/2374.UC/706910

UNIVERSITY OF Cincinnati DIGITAL RESOURCE COMMONS

About the DRC UC Digital Projects UC Libraries

UC DRC Home University of Cincinnati Libraries Historical Records Cincinnati Subway and Street Improvements

Search UC DRC

UC DRC:

- ☒ Search UC DRC
☐ This Community

OhioLINK DRC:

Browse

All of UC DRC

Communities & Collections
 Authors
 Titles
 Subjects
 Dates
 Series

This Community

Authors
 Titles
 Subjects
 Dates
 Series

My Account

Login
 Register

Cincinnati Subway and Street Improvements

Photographic prints and negatives from 1920 to 1956 from an extensive archive of the City Engineer, City of Cincinnati.

Collections in this community

- [Miscellaneous Photographs and Negatives](#)
- [Rapid Transit Construction](#)
- [Street Construction and Improvements](#)

Full Text Search:

Go

[Advanced Search](#)

Recent Submissions

[\(See all records\)](#)

[Rapid Transit Photographs -- Box 15, Folder 05 \(March 22, 1921 - March 25, 1921\) -- negative, 1921-03-25, 10:14 A.M.](#)

Unknown photographer; Cincinnati (Ohio). Interurban Rapid Transit Commission (University of Cincinnati. University of Cincinnati Libraries; University of Cincinnati; University of Cincinnati. Archives and Rare Books Library, 1921-03-25)



[Rapid Transit Photographs -- Box 15, Folder 05 \(March 22, 1921 - March 25, 1921\) -- negative, 1921-03-25, 10:00 A.M.](#)

Unknown photographer; Cincinnati (Ohio). Interurban Rapid Transit Commission (University of Cincinnati. University of Cincinnati Libraries; University of Cincinnati; University of Cincinnati. Archives and Rare Books Library, 1921-03-25)



[Rapid Transit Photographs -- Box 15, Folder 05 \(March 22, 1921 - March 25, 1921\) -- negative, 1921-03-25, 10:14 A.M.](#)



BACK

Rapid Transit Photographs -- Box 15, Folder 05 (March 22, 1921 - March 25, 1921) -- negative, 1921-03-25, 10:14 A.M. - Mozilla Firefox

File Edit View History Bookmarks Tools Help

Rapid Transit Photographs -- Box 15, Fol... +

drcuc-test.ohiolink.edu/handle/2374.UC/713155?show=full

UNIVERSITY OF Cincinnati DIGITAL RESOURCE COMMONS

About the DRC UC Digital Projects UC Libraries

UC DRC Home University of Cincinnati Libraries Historical Records Cincinnati Subway and Street Improvements Rapid Transit Construction View Item

Search UC DRC

UC DRC:

- ☒ Search UC DRC
☐ This Collection

OhioLINK DRC:

Browse

All of UC DRC

Communities & Collections
 Authors
 Titles
 Subjects
 Dates
 Series

This Collection

Authors
 Titles
 Subjects
 Dates
 Series

My Account

Login
 Register

Rapid Transit Photographs -- Box 15, Folder 05 (March 22, 1921 - March 25, 1921) -- negative, 1921-03-25, 10:14 A.M.

Show simple item record

dc.contributor.author	Unknown photographer	en_US
dc.contributor.author	Cincinnati (Ohio). Interurban Rapid Transit Commission	en_US
dc.date.accessioned	2013-03-22T17:34:23Z	
dc.date.available	2013-03-22T17:34:23Z	
dc.date.created	1921-03-25T15:14:00Z	en_US
dc.date.issued	2013-03-22	
dc.identifier.uri	http://hdl.handle.net/2374.UC/713155	
dc.description	Photographer's notes written on negative: Mar. 25, 1921 / 10:14 A.M. / North of Odeon St. shows Wade St. fill / 586	en_US
dc.format.extent	8" x 10"	en_US
dc.format.medium	cellulose nitrate film	en_US
dc.format.medium	gelatin silver negative	en_US
dc.format.mimetype	image/jpeg	en_US
dc.relation.ispartof	Cincinnati Subway and Street Improvements	en_US
dc.relation.ispartofseries	Rapid Transit Photographs -- Box 15	en_US
dc.rights	Attribution-NonCommercial-NoDerivs 3.0 United States	*
dc.rights.uri	http://creativecommons.org/licenses/by-nc-nd/3.0/us/	*
dc.subject	Odeon Street	en_US
dc.subject	Wade Street	en_US
dc.subject.lcsh	Subways--Design and construction	en_US
dc.subject.lcsh	Cincinnati (Ohio)--History--20th century	en_US
dc.title	Rapid Transit Photographs -- Box 15, Folder 05 (March 22, 1921 - March 25, 1921) -- negative, 1921-03-25, 10:14 A.M.	en_US
dc.type	Photograph	en_US

University of Cincinnati - Mozilla Firefox

File Edit View History Bookmarks Tools Help

University of Cincinnati

digproj.libraries.uc.edu:8180/luna/servlet/allCollections

Welcome on-campus user | Login

Search Catalog Data Catalog Data & text in Documents

LUNA

Advanced Search


Collections Explore Create Share This Help

Browse Selected Collections

Collection Selection

- All Collections (247,422)
- University of Cincinnati Collections
 - Architecture and Urban Planning Collection
 - George Catlin: The Printed Works
 - DAAP Digital Image Teaching Collection
 - DAAP Library Visual Arts Collection
 - Robert A. Deshon Courthouses Collection
 - Phil Foster Collection
 - McKenney and Hall: History of the Indi...
 - The Spanish Antiphoner
 - C. Szwedzicki: The North American Indi...
 - Terrace Plaza Hotel
 - Twenty-fifth General Hospital
 - Alice Weston Great Houses
- LUNA Commons Collections
 - A. D. White Architectural Photographs
 - Beyond the Taj
 - Billie Jean Isbell Andean Collection
 - Birkbeck History
 - Boynton Collection of Early Claremont ...
 - Catena-Historic Gardens and Landscapes...
 - City of Claremont History Collection
 - Claremont Colleges Photo Archive
 - Cornell University Political Americana...
 - David Rumsey Historical Map Collection
 - Estate Collection
 - Farber Gravestone Collection
 - Folger Digital Image Collection
 - Hoover Institution Poster Collection
 - Howell Icelandic Collection
 - Inscriptions of Eleusis

Featured Media

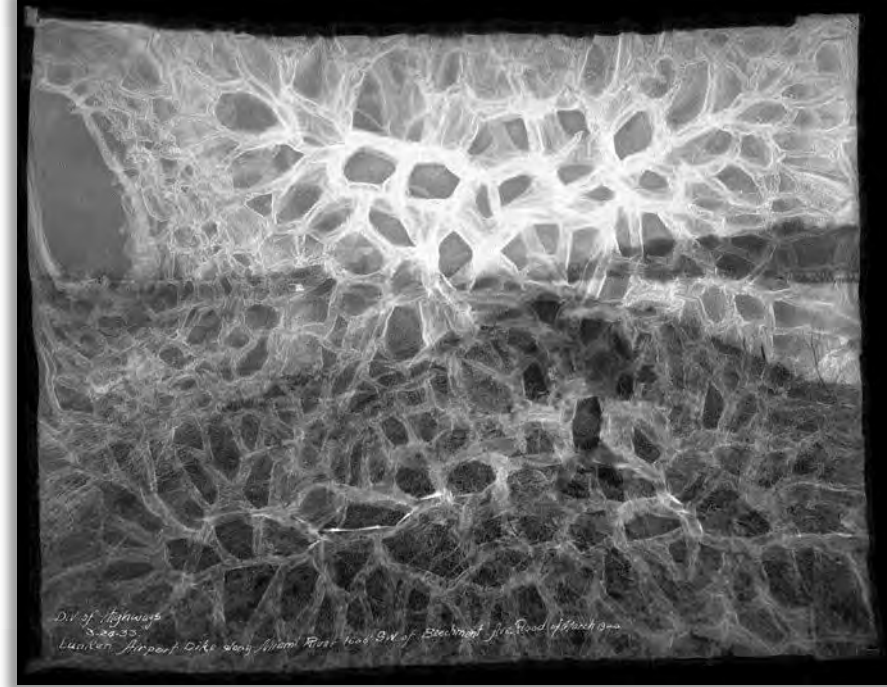


Category Pages Browse All

University of Cincinnati Libraries Digital Collections support the University Libraries' mission to provide excellent research collections and expedite access to knowledge. These efforts further the University of Cincinnati's comprehensive mission of teaching, learning, research and community service. Please see the [Fair Use](#) policy. For more information email ucdp@uc.edu.

CHALLENGES

- The good, the bad – and vinegar syndrome!
 - Cellulose Nitrate
 - Safe handling
 - Transfer to cold storage
 - Acetate
 - Scanning warped negatives
 - Refolding



- Contracting Vendor
 - Scanner "hiccups"
 - Transcription validation
- Survey of collection
 - Original order and missing folders
 - Naming inconsistencies



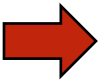
BACK





SUCCESSSES

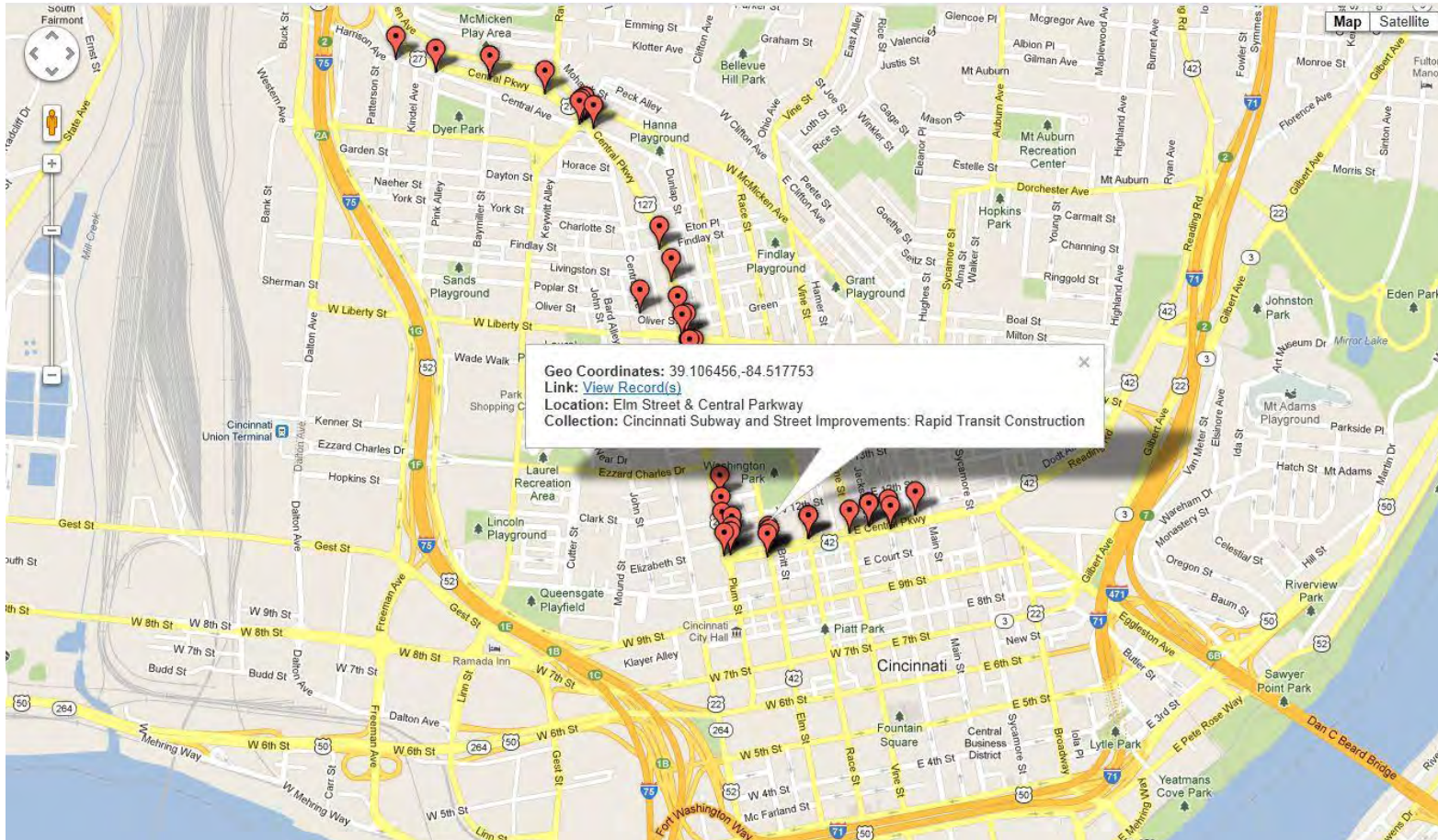
- All negatives scanned
 - Visual data saved
- Photographer's notes transcribed from negatives and prints
 - Used to create metadata
 - Photographers identified
- Location coordinates plotted in Google
 - View the [Subway Route via Google Maps](#)



- Identification of nitrate negatives for removal
 - Separation of nitrate from acetate
 - Transfer to cold storage after scanning



BACK



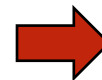
- Increased accessibility
- Greater awareness of collection
 - Cincinnati Magazine May edition
 - University Libraries Spring Newsletter
 - Weekly blogs on University Libraries' Facebook page



- Physical exhibit installed in Archives & Rare Books Library



- Online collection building in Digital Resource Commons and LUNA
- Archives & Rare Books Library and Digital Collections web pages under construction



Angela Vanderbilt Project Digital Archivist

Email: vanderam1@gmail.com

Archives & Rare Books Library

Email: archives@ucmail.uc.edu

Phone: (513) 556-1959

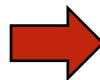
Digital Collections

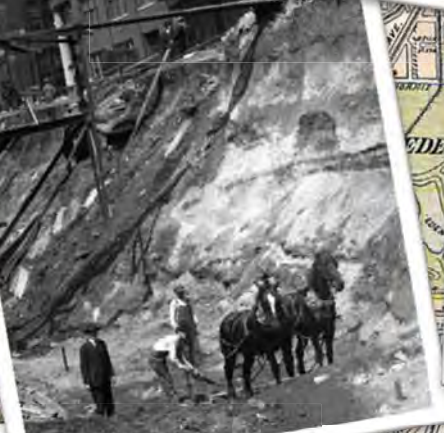
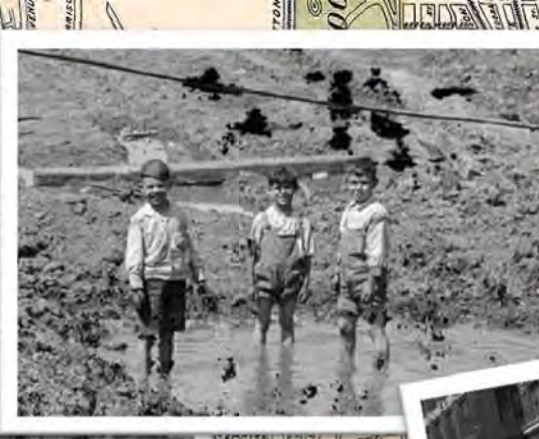
Email: UCDP@uc.edu

Phone: (513) 556-1555



This project is funded by a grant for \$60,669 through the Library Services and Technology Act, administered by the State Library of Ohio.





NEWPORT